

MERCURIO

MERCURIO is the software that allows the centre users to manage CAE field measurement stations by remote.

MERCURIO manages the messages, the communication and the interactions among the various system components, granting the respect of the priorities set by the network's administrator and managing the flux of information to and from the control centre.

It is able to manage also very complex networks, maintaining data-capture times very low.

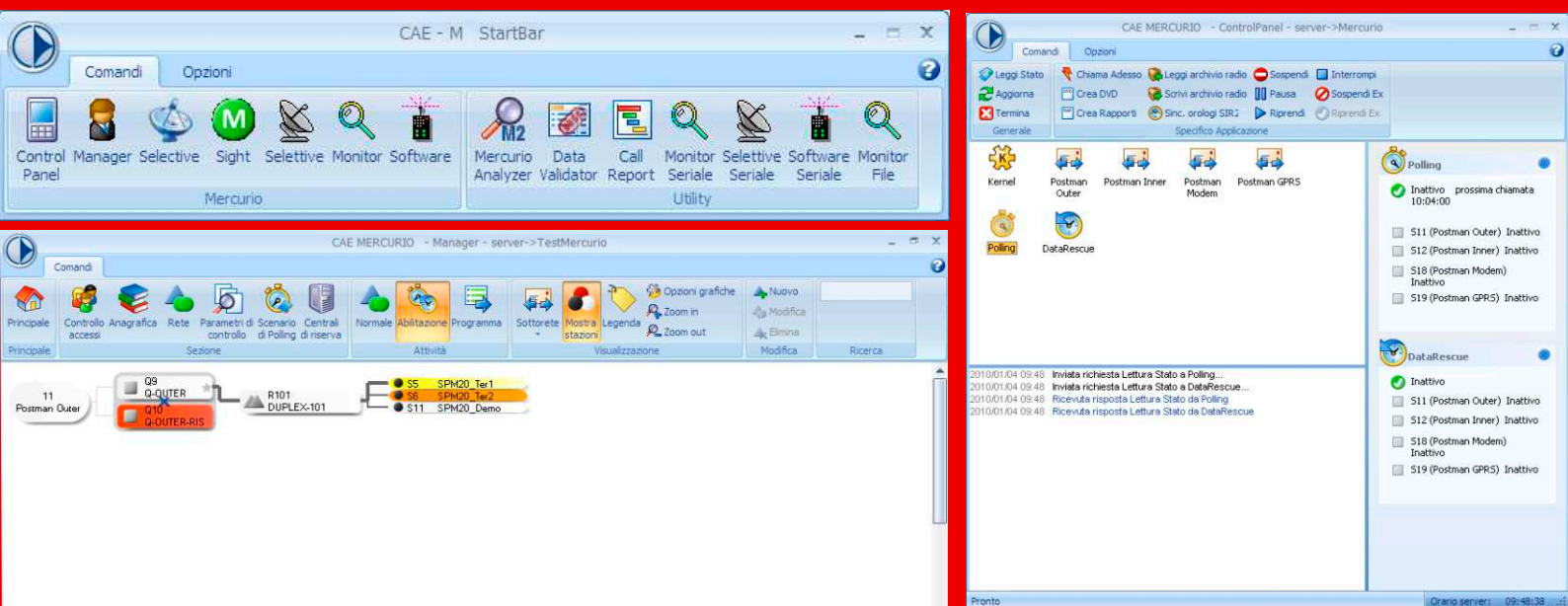
APPLICATION AND FUNCTIONS

MERCURIO's task is to acquire data and create a .DVD database (CAE proprietary compressed format), which is subsequently processed by visualization and elaboration software packages such as POLIFEMO and GIANO.

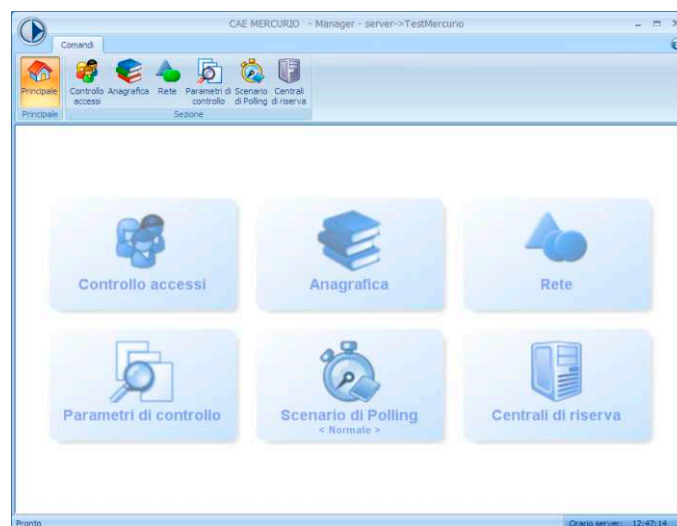
MERCURIO's task is to configure the radio networks and the repeaters, carrying on a series of tests on the full system. It is able to organize and make the whole system working by configuring the network's knots, the connected stations, the links between them and the radio transmitted data.

Through a special tool, **MERCURIO** is able to execute the configuration of the entire radio network as well as of the single stations, utilizing user-friendly and easy comprehensible graphic interfaces.

All the operations are however protected by specific passwords. On the managed station network, **MERCURIO** is able to do a set of queries such as selective calls, cyclical calls, or restore lost data during the last 24 hours.



This gives unquestionable advantages, among which limiting the possibility of entire system crashes, eliminating and reactivating the only process that caused the block, permitting the execution of many requests simultaneously, reducing the complexity of every single module and permitting the software's expansion in a flexible way, also after the first installation.



CAE MERCURIO - Manager - server - TestMercurio

Comandi

Principale Controllo accessi Anagrafica Rete Parametri di controllo Scenario di Polling di riserva Centrali Stazioni Sensori Tipi Sensori Job Carica anagrafica (sen, asp, alp) Integra anagrafica (sen, asp, alp) Importazione Carica messaggi.txt

Principale

Stazioni
Ultimo aggiornamento: 14/12/2009 09:34
File: C:\Users\hivest\Documents\asp (Modificato il 14/12/2009 09:34)

Sensori
Ultimo aggiornamento: 18/12/2009 11:38
File: V:\Programmi\test\Docent\asm (Modificato il 18/12/2009 11:38)

Tipi Sensori
Ultimo aggiornamento: 11/12/2009 10:25
File: V:\Users\hivest\Documents\asp (Modificato il 11/12/2009 10:25)

Job
Ultimo aggiornamento: File (Modificato X)

Carica messaggi
Ultimo aggiornamento: 15/11/2010 13:46
File: C:\Programmi\CAE\Pg\Mercurio\2\messaggi.en.txt (Modificato il 28/10/2009 15:18) - Versione: 20091025

Pronto Clario server: 12:40:13